



EROMANGA URANIUM

SOURCING 21ST CENTURY ENERGY

“Early steps into the Mesozoic”

Kevin Lines
Managing Director
March 2007

URANIUM CONFERENCE - MARCH 2007

1

Eromanga Uranium Limited



Listed 31 October 2006

Shares **125.4 million**
Major shareholder Maximus Resources
(35.4% escrowed for 2 years)

Total raised \$14.76 million

Current market capitalisation (19 March 2007) \$35.1 million

URANIUM CONFERENCE - MARCH 2007

2

Location of Projects

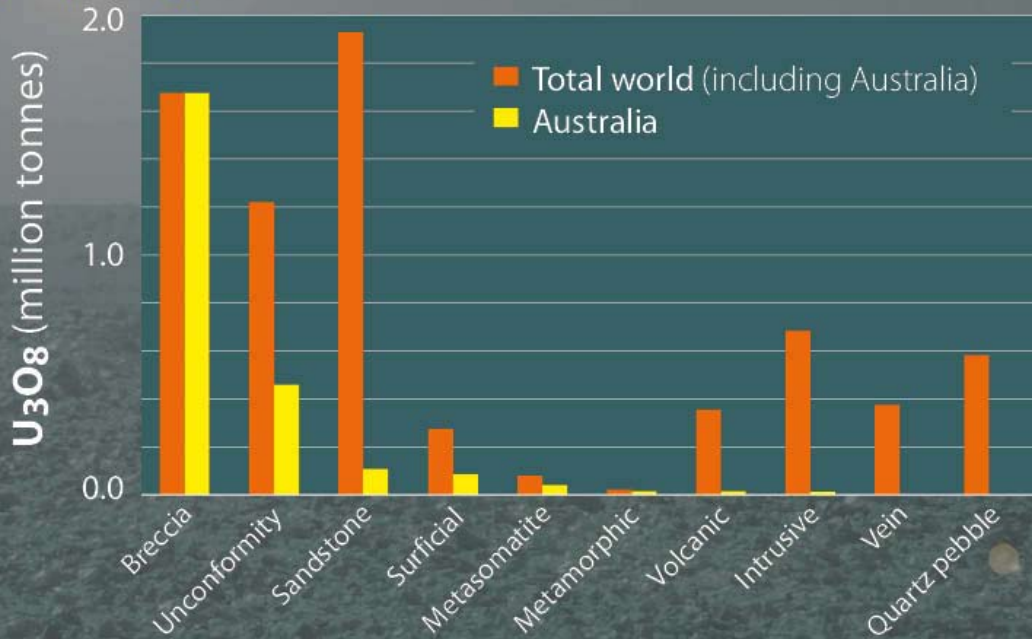


20,000 km² in five projects



- Large coherent land packages averaging 4,000 km² each.
- Allows flexibility to adjust exploration focus as understanding develops.
- Being "first-in" secures tenure in the most favourable locations.

Australia vs world distribution of uranium resources by deposit types

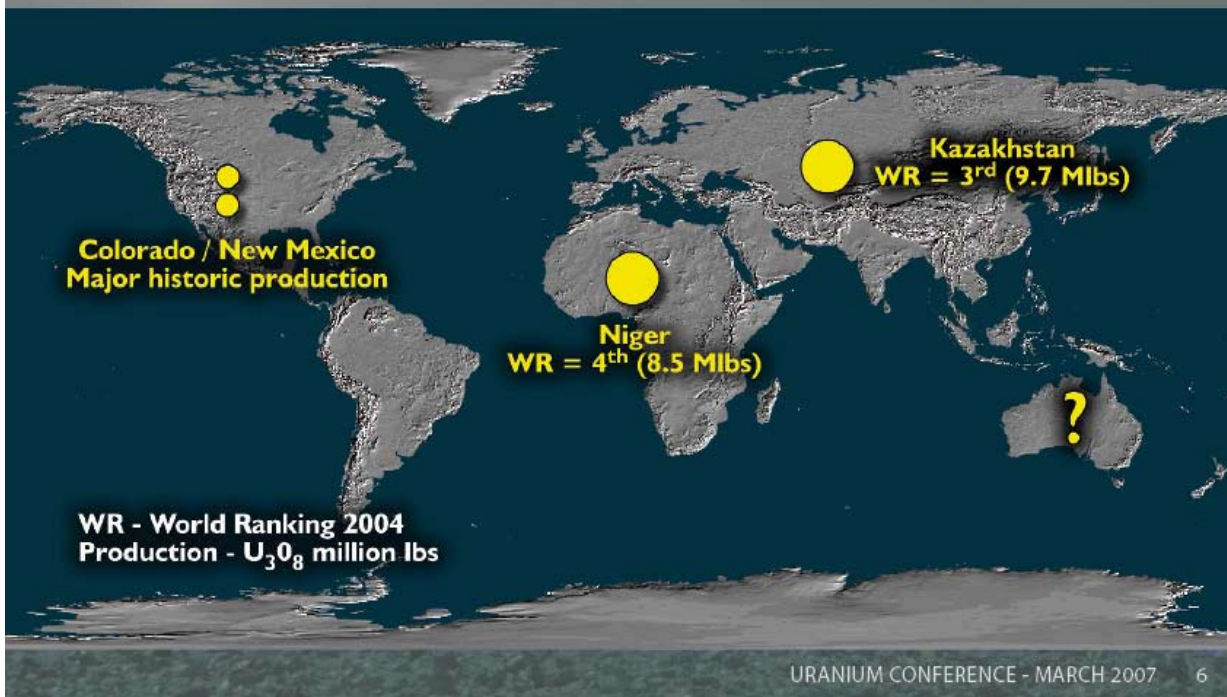


Courtesy of Ian Lambert

URANIUM CONFERENCE - MARCH 2007

5

Major mesozoic sandstone hosted uranium



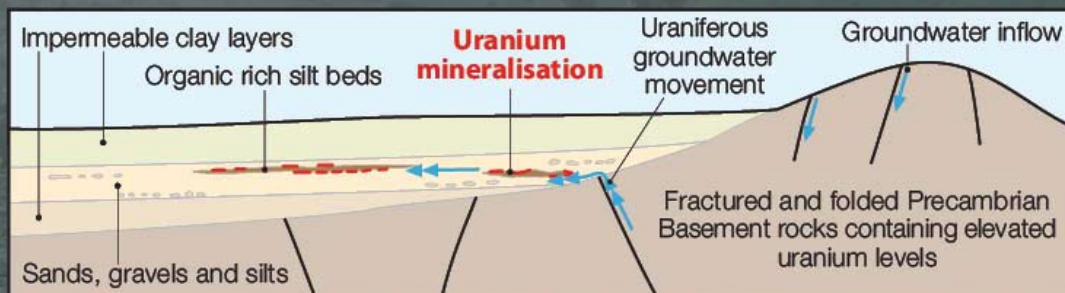
URANIUM CONFERENCE - MARCH 2007

6

Eromanga Basin initiative



- Innovative geological model.
- Very limited previous exploration
- New remote sensing and geophysical techniques allow rapid, cost effective targeting of palaeodrainages.



URANIUM CONFERENCE - MARCH 2007 7

Marree Project



- 3927 km² of tenure
- Adjacent to:
 - Northern margins of the uranium enriched Mount Painter Block.
 - Similar setting to the operating Beverley ISL Uranium Mine.
 - Over 100 km of Eromanga Basin margin to test.

URANIUM CONFERENCE - MARCH 2007 8

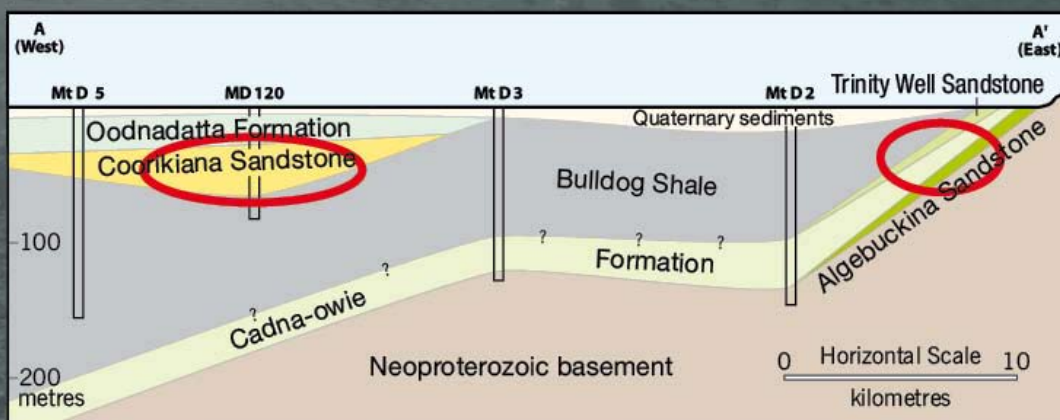
Marree Project

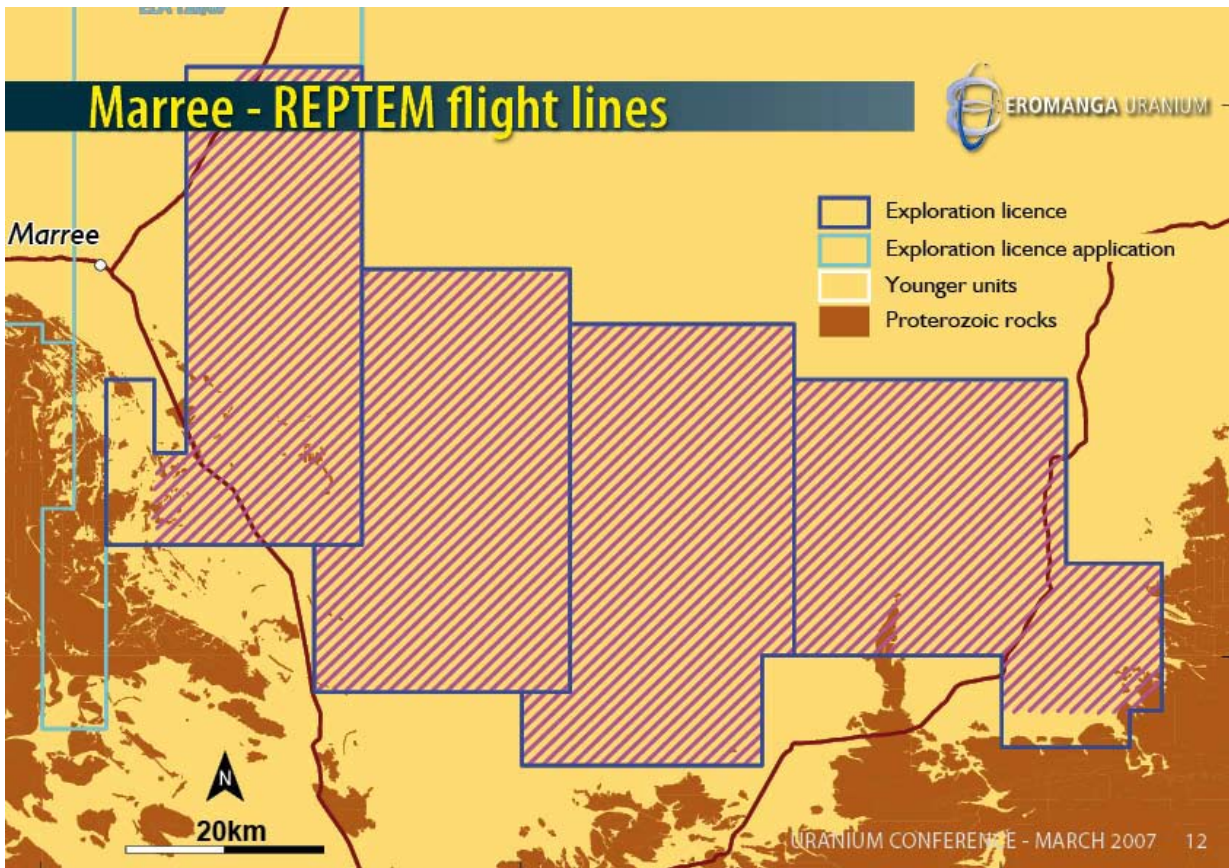
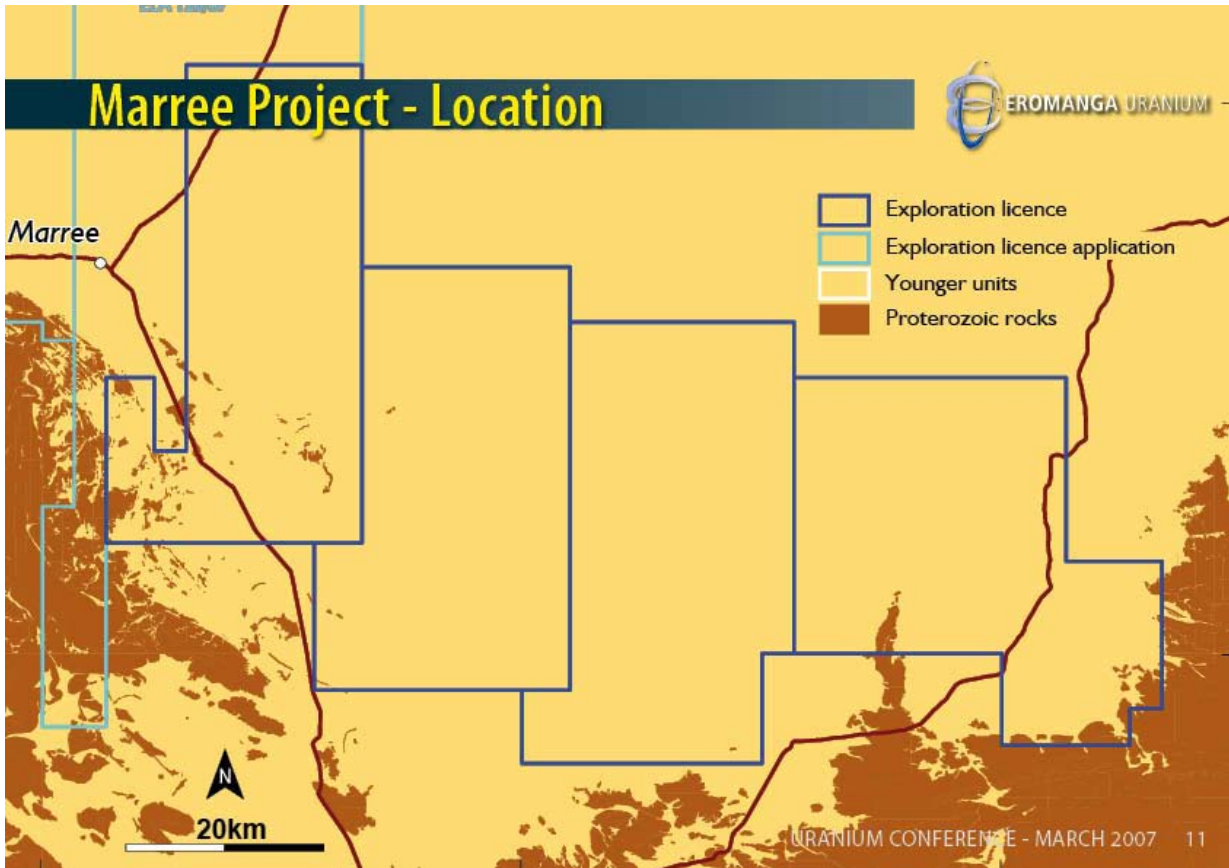


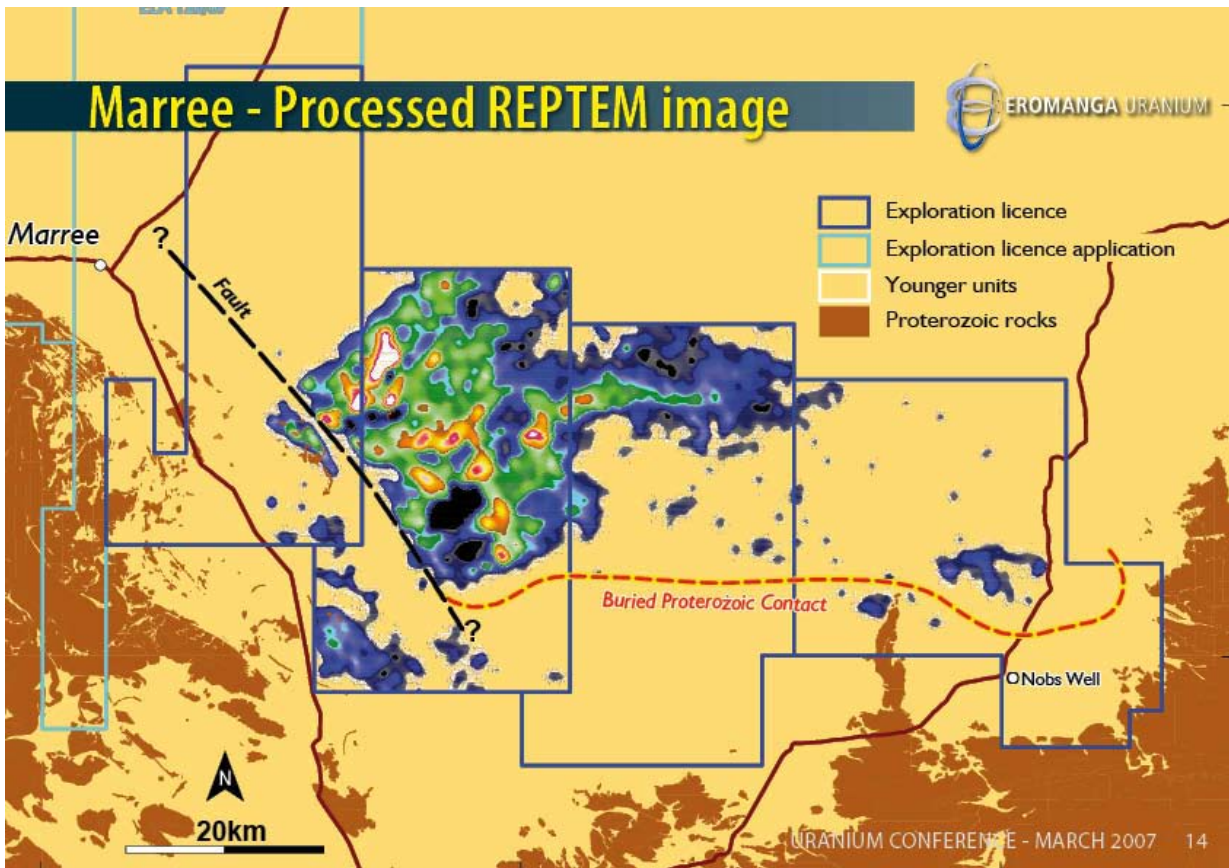
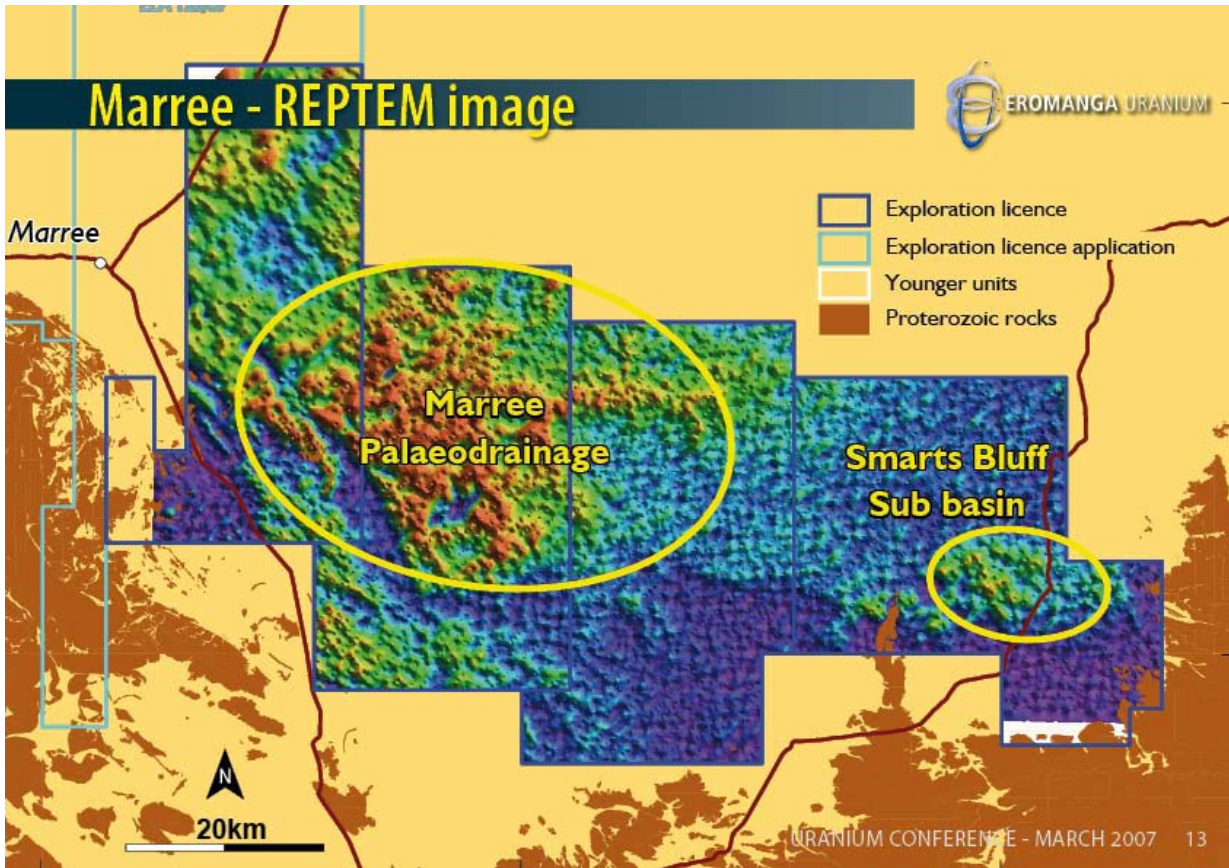
Marree Project

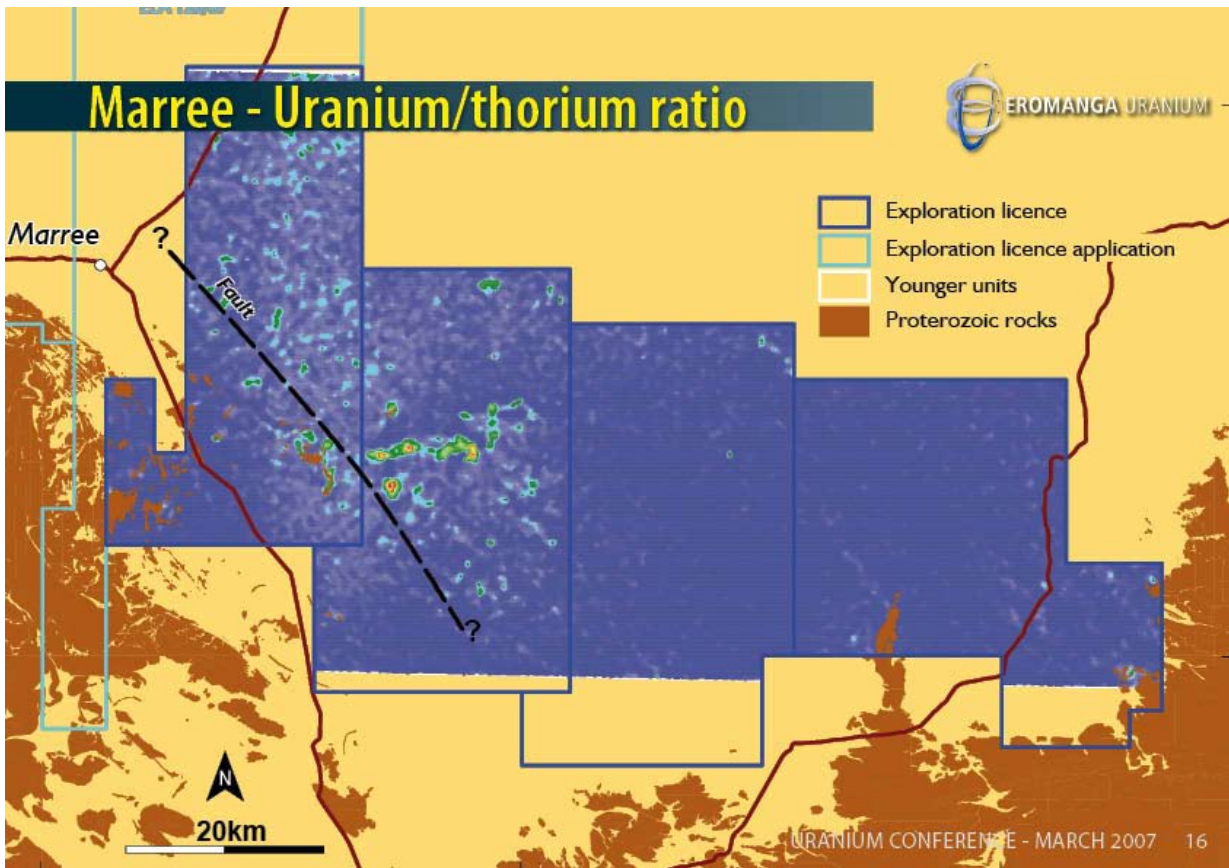
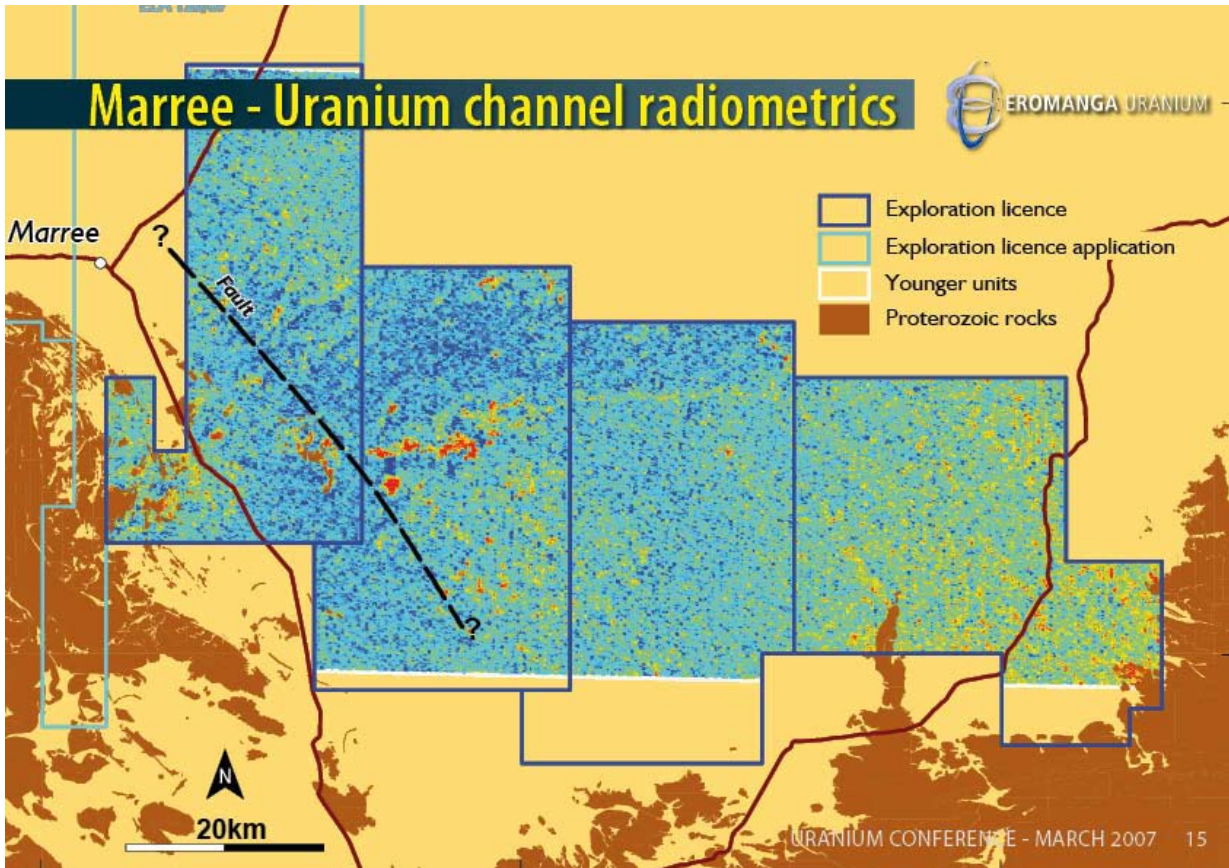


- Multiple target horizons in Trinity Well and Algebuckina Sandstone.
- Target horizons outcrop at basin margin.
- Shallow depth: - rapid, lower-cost exploration
- potential for application of ISL mining techniques.

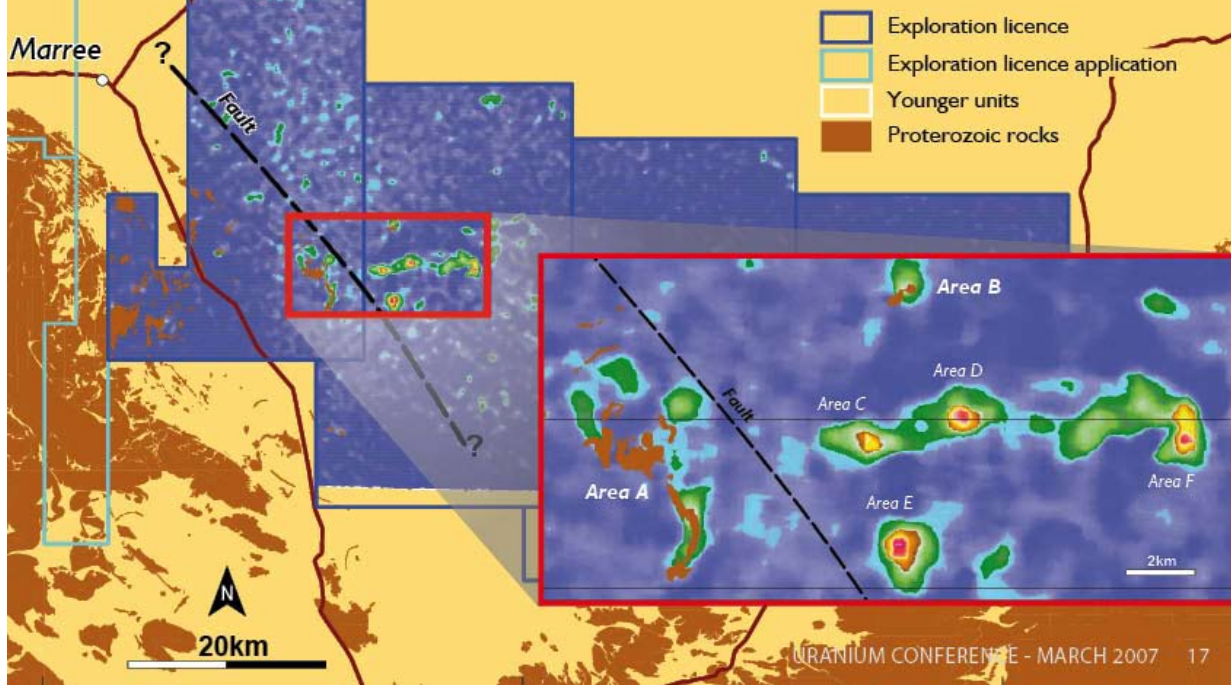








Marree - Uranium/thorium ratio



Future regional EM surveys

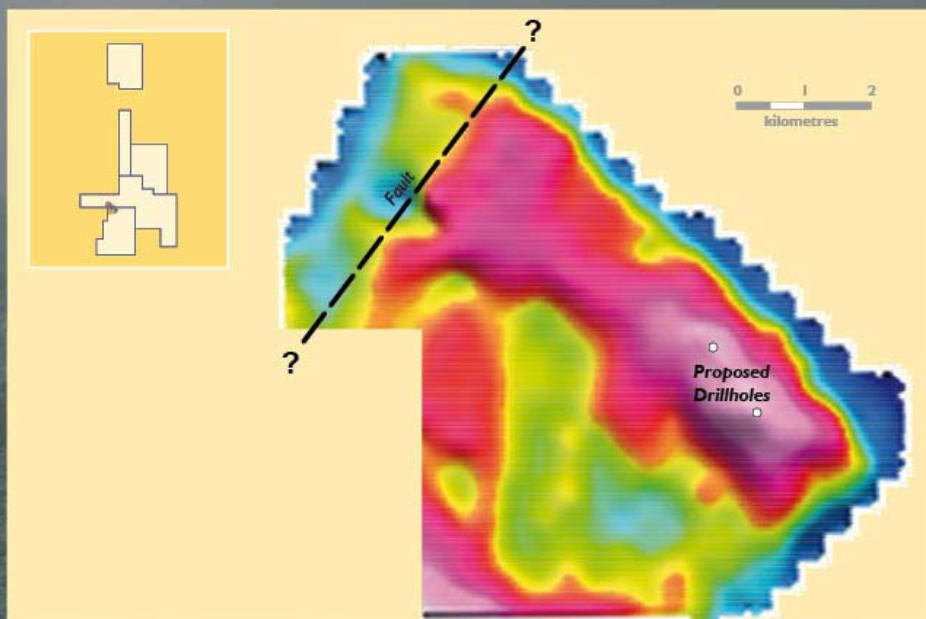


Billa Kalina Project



- Over 4000 km² of granted tenements at the heart of the Stuart Shelf uranium–copper–gold province.
- Eromanga earning 50% in non-diamond mineral rights.
- Targetting sandstone-hosted uranium in Permian palaeodrainages of the Arkaringa Basin.
- Additional potential for Mesozoic deposits in the Algebuckina Sandstone.
- Also targetting gravity highs for Olympic Dam style iron-oxide uranium-copper-gold deposits.

Billa Kalina gravity anomaly



Summary



Results of the *"Early steps into the Mesozoic"* have delighted the company.

Major new palaeodrainage identified at the Marree Project - associated uranium anomalism.

Exploration approach has been validated.

Opportunity to leverage off early successes with major airborne EM survey at Billa Kalina, Abminga and Kingoonya in 2007.

please visit our web site at www.eromangauranium.com