



# BROKER PRESENTATION

**Kevin Lines**  
Managing Director

August 2008

## DISCLAIMER

This presentation contains forward looking statements that are subject to risk factors associated with the exploration and mining industry. It is believed that the expectations reflected in these statements are reasonable, but they may be effected by a variety of variables which could cause actual results or trends to differ materially.

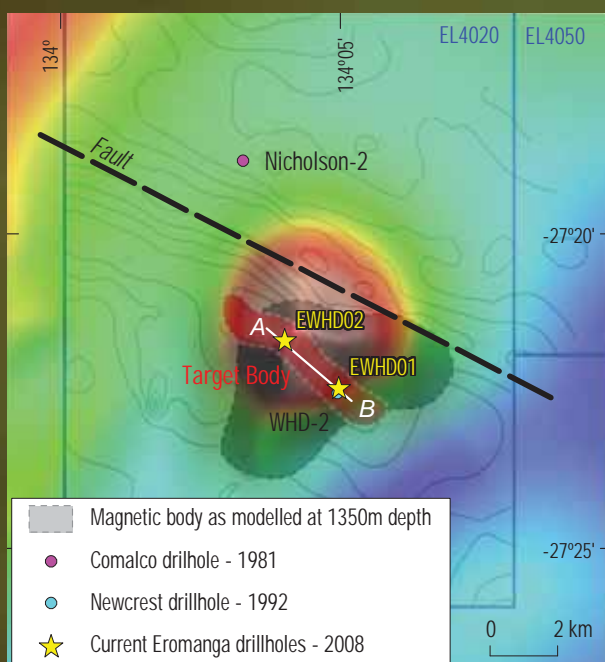
# EROMANGA URANIUM LIMITED

- Uranium
- Copper, gold, uranium



- Dual exploration focus on Iron oxide, copper, gold, uranium (IOCGU) and sandstone hosted uranium mineralisation.
- Strongly South Australia and Northern Territory focussed.
- Over 26,000 sq km under management.
- Actively drilling on multiple fronts.
- Cash on hand of \$6.54 million (at 30/06/08).

## IOCGU – WELBOURN HILL PROJECT (100% ERO)

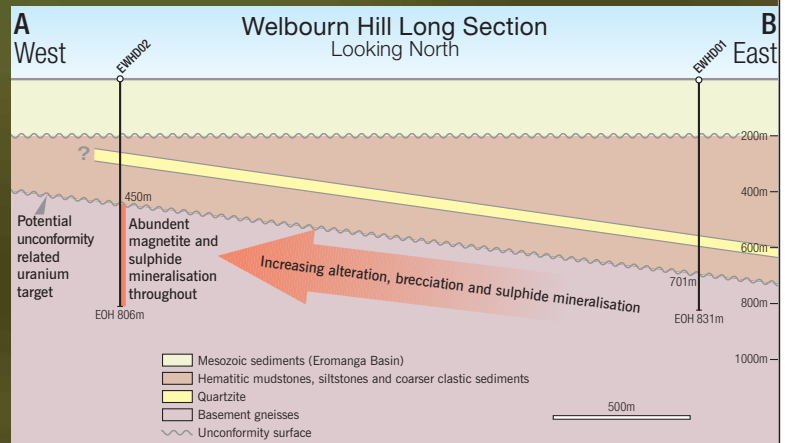


- High order coincident gravity and magnetic anomalies at the northern limits of the Gawler Craton.
- Highly favourable structural setting.
- PACE support of \$100,000.
- Two holes completed to-date over gravity feature.
- Initial results very encouraging. Confirms the presence of significant volumes of IOCGU type fluids.

# IOCGU – WELBOURN HILL PROJECT

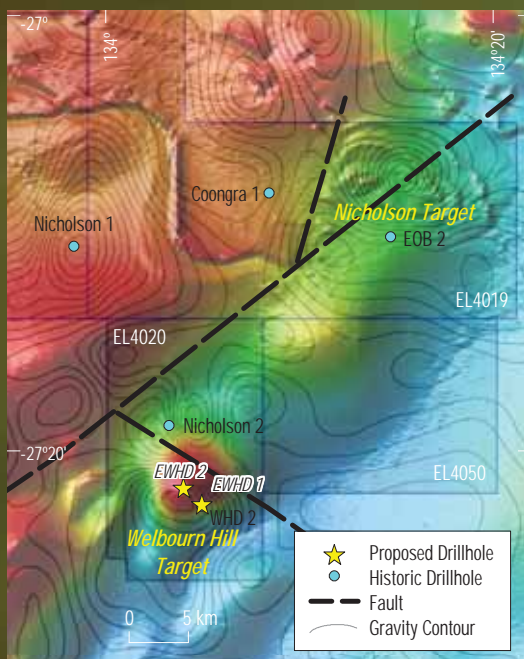
(continued)

- Best result to-date of 18m at 0.1% Cu in well developed chlorite breccia.
- Strong trend of increasing alteration, brecciation and sulphide mineralisation between holes EWHD01 and EWHD02.
- Target remains open to the north, south and west.
- Further drilling after all results from exploration to-date are received.
- Recognition of the potential for the project area to host unconformity-related uranium mineralisation.



# IOCGU – NICHOLSON PROJECT

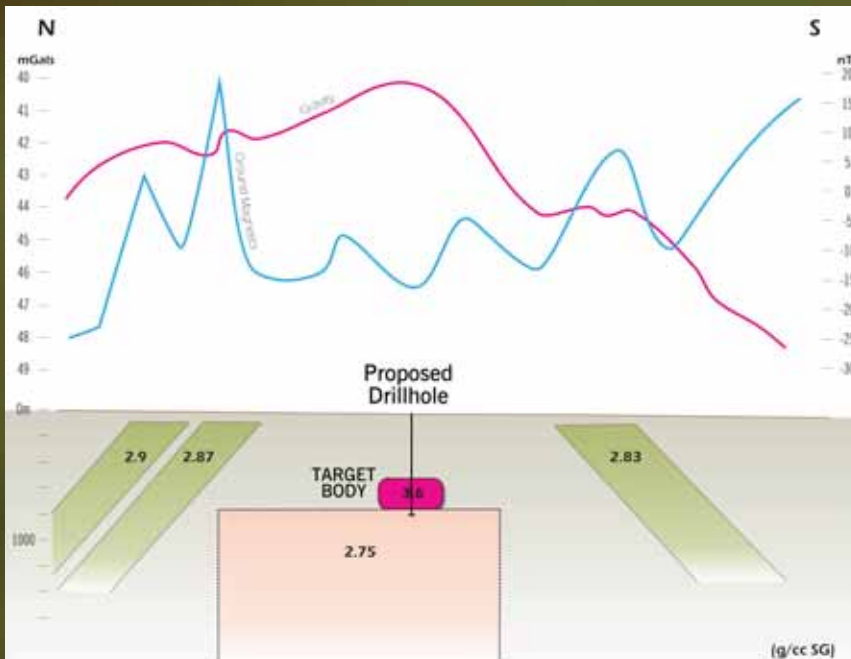
(100% ERO)



- Major gravity anomaly (10Mgals)
- Coincident magnetic signature suggesting buried volcanic complex
- Over 10km x 5km in size
- Never previously explored
- Entire area cleared for drilling

# IOCGU – NICHOLSON PROJECT

(Continued)

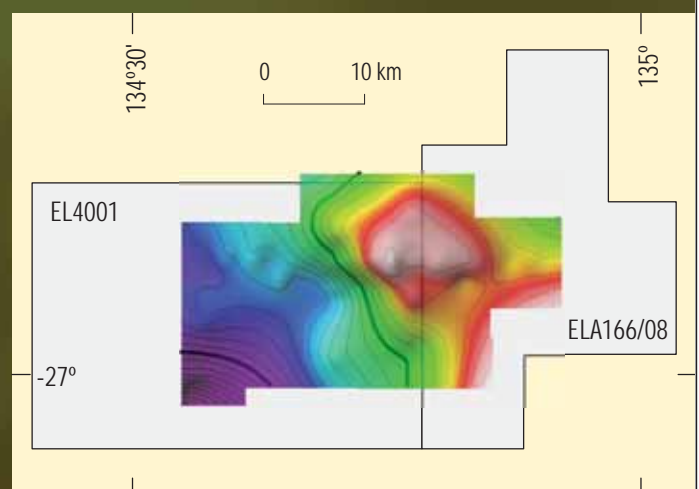


- Drilling of first deep diamond hole currently underway.
- Approaching target depth of 500-600m below surface.
- Cover sequence sediments intersected to-date are in line with gravity model.
- Anticipate intersecting target position within the next 3-5 days.

# IOCGU – TODMORDEN PROJECT

(ERO earning 80% from InterMet Resources)

- First phase gravity survey completed.
- Modelling suggests the source of moderate 6Mgal anomaly is likely to be greater than 800m.
- Limiting IOCGU potential
- But project area geology retains significant exploration potential
- Review underway to direct future exploration programs.



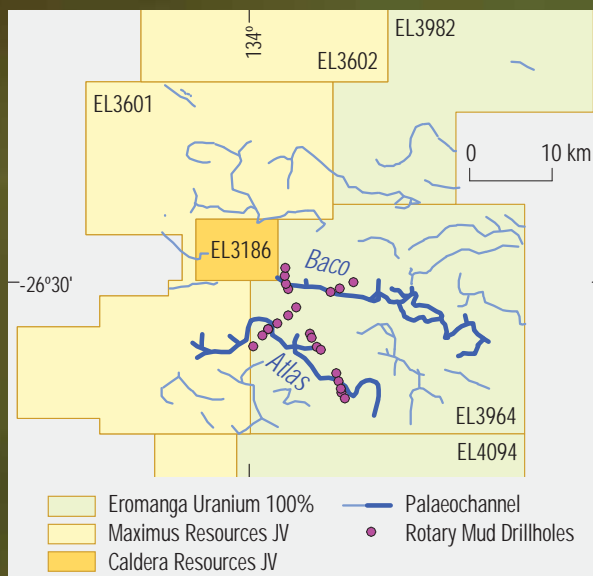
# SANDSTONE-HOSTED URANIUM

- Targeting sandstone-hosted (roll-front) style uranium mineralisation around the margins of the Eromanga Basin.
- Very limited previous exploration.
- Four major project areas.
- Full airborne EM coverage completed over all projects.
- Drilling scheduled for September 2008 at Billa Kalina and Abminga

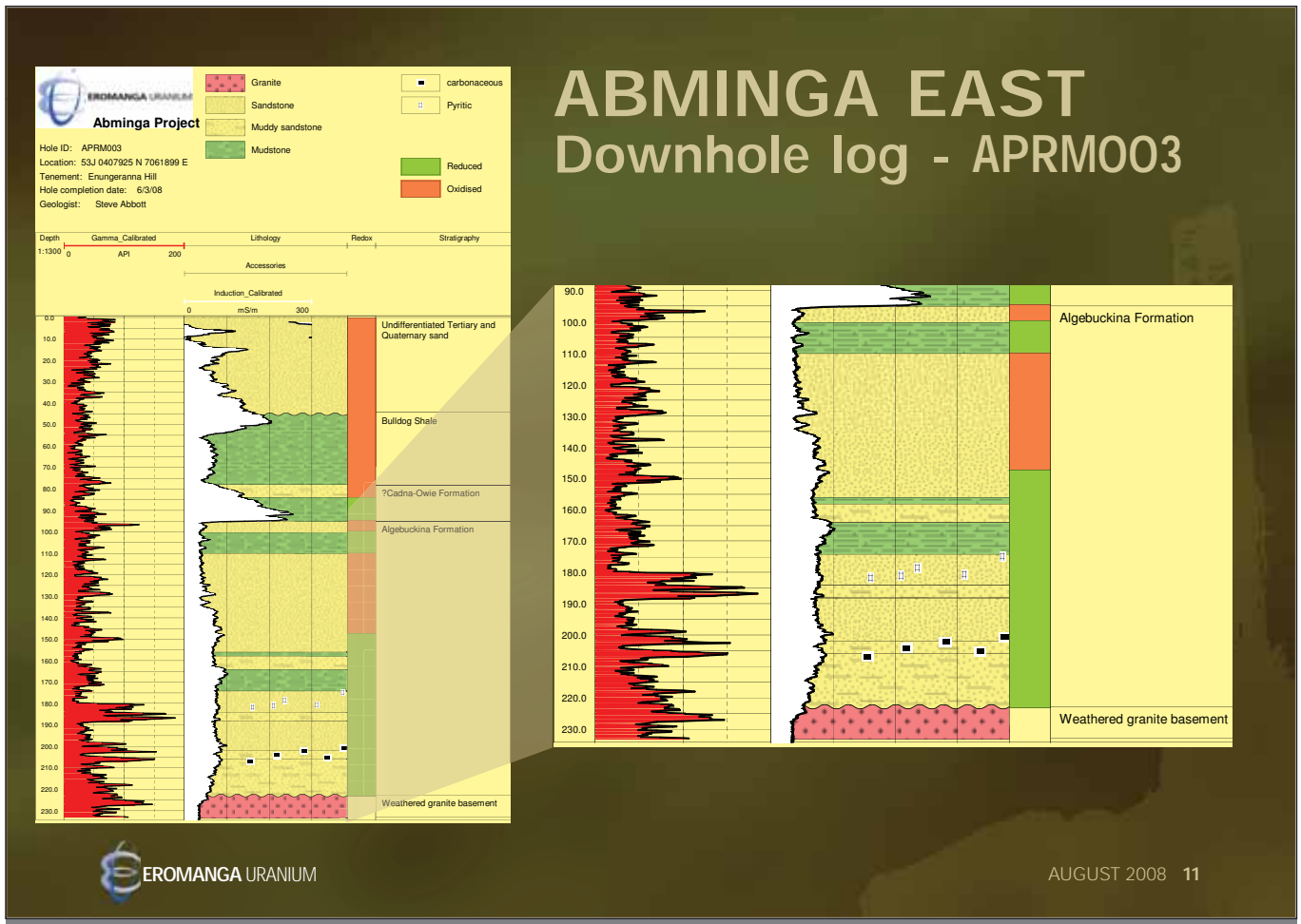


## ABMINGA URANIUM PROJECT

(incorporating Abminga East Project)



- Over 7000 sq km of contiguous tenements under management.
- First phase drilling on two regional traverses completed.
- Results indicate palaeodrainages interpreted from EM are largely in the shallow Tertiary. These are mostly too oxidised.
- Deeper underlying Mesozoic Algebuckina Sandstone remains highly prospective.



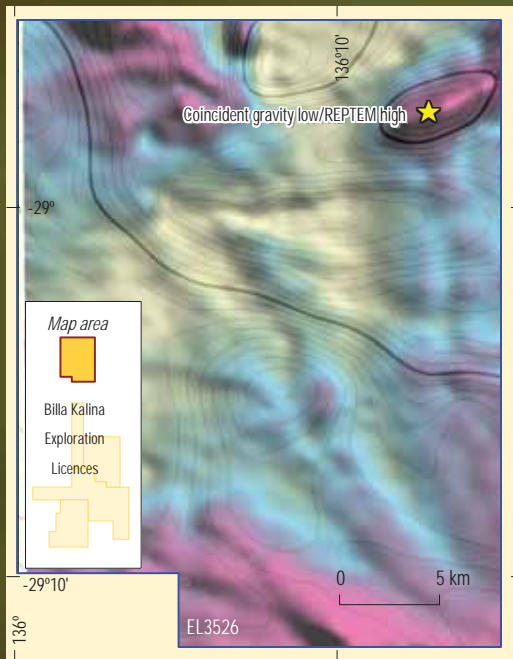
## ABMINGA URANIUM PROJECT

(Continued)

- All the critical parameters for uranium deposition have been established at Abminga.
- Improved understanding of the strengths/ limitations of airborne EM.
- Integrating EM with magnetic data to better map deeper Mesozoic drainages at the base of the Alge buckina Sandstone.
- Micro-gravity survey to confirm interpretations to commence late August 2008.
- Second phase drilling to start in mid-September 2008.



# BILLA KALINA URANIUM



- Airborne EM and recent new gravity data has identified a discrete sub-basin at the Sunshine Dam prospect.
- Considered to be an ideal site for the development of roll-front or Mulga Springs styles of uranium mineralisation.
- All required clearances are now in place.
- Drilling scheduled to commence in early September 2008.

# PROJECT PIPELINE

## Marree

- Micro-gravity survey of eastern basin margin scheduled for late September 2008.
- Second phase drilling to commence in mid-late October 2008.

## Kingoonya

- Detailed interpretation of airborne EM ongoing.
- Permitting and clearance surveys progressing.
- Drilling scheduled for late 2008/early 2009.



# NEW PROJECTS

## Tanami Uranium – Suplejack Project

- Eromanga Uranium has been successful in its application for EL26625 in the Tanami region of the Northern Territory.
- The Company is now in receipt of the consent to negotiate with the Central Land Council, on behalf of the Traditional Owners, for grant of the exploration licence.
- Previous exploration for gold has highlighted the geology of the licence area to be ideal for the development of unconformity-related uranium mineralisation, similar to that in the Alligator Rivers region of the Northern Territory.
- Eromanga intends to advance the permitting of this project as quickly as possible to allow on-ground exploration to commence.

## Project generation

The Company continues to review business opportunities that would strengthen our exploration portfolio.

# SUMMARY

- Eromanga continues to be a very active exploration group with drilling on multiple fronts.
- Initial drill testing at Welbourn Hill has confirmed the potential for the area to host IOCGU mineralisation.
- Drilling underway at the exciting Nicholson Project.
- Company now in a position to maximise the value of its airborne EM data.
- Drilling scheduled to re-commence at Abminga in mid-September.
- Initial testing of Sunshine Dam scheduled for early September 2008.
- Strong project pipeline
- Well funded to succeed.